

Overview

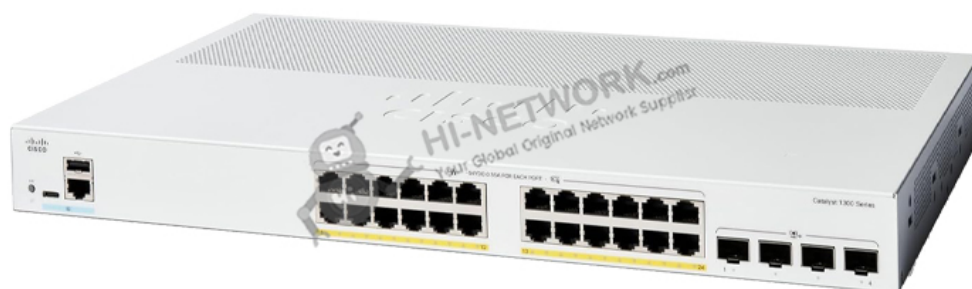
The Cisco C1300-24P-4X is a high-performance switch designed to deliver enterprise-grade connectivity with its 24x 10/100/1000 PoE+ ports. This switch is ideal for businesses requiring robust security, scalability, and efficient power management for their network. It leverages Cisco's premium technology, bringing reliability and advanced features to any network deployment.

Quick Specification

Table 1 shows the quick specification.

Model	C1300-24P-4X
Dimension	445 x 299 x 44 mm (17.5 x 11.77 x 1.73 in)
Weight	3.95 kg (8.70 lb)
Operating Temperature	23° to 122°F (-5° to 50°C)
Operating Humidity	10% to 90%, relative, noncondensing
Ports	24x 10/100/1000 PoE+ ports with 195W power budget
Combo Ports	4x Gigabit SFP
Form Factor	Fixed Configuration

Figure 1 shows the appearance of C1300-24P-4X.





Product Details

Product Features

- 24 Gigabit Ethernet PoE+ ports to support a variety of devices
- 4 x 10G SFP+ uplink ports for high-speed connectivity
- 370W PoE power budget to support power-hungry devices
- Advanced security features including port security and ACLs
- Scalability for growing network demands with stackable design

Product Applications

- Powering IP cameras, VoIP phones, and wireless access points in enterprise environments.
- Deploying in small and medium-sized businesses requiring reliable and secure network connectivity.
- Supporting campus network deployments with high-speed uplinks and robust PoE capabilities.

Supported Options

Accessory	Model
Cisco 10G SFP+ Module	SFP-10G-SR
Redundant Power Supply	PWR-RPS2300
Stacking Kit	STACK-T1-50CM

Compare to Similar Items

Model	Differences
Cisco C1200-24T-4G	Non-PoE, 4x 1G SFP uplinks
Cisco C1300-12P-2X	12x PoE+ ports, 2x 10G SFP+ uplinks
Cisco C1500-48P-6X	48x PoE+ ports, 6x 10G SFP+ uplinks

Get More Information

Do you have any questions about the C1300-24P-4X?

Contact us now via info@hi-network.com.



Specification

C1300-24P-4X Datasheet	
Ports	24x 10/100/1000 PoE+ ports with 195W power budget
Combo Ports	4x Gigabit SFP
Mounting	Rack-mountable
Forwarding Rate	95.23 Mpps
Switching Capacity	128.0 Gbps
Power	100-240V 50-60 Hz, internal, universal
PoE	Supported
Dimension	445 x 299 x 44 mm (17.5 x 11.77 x 1.73 in)
Weight	3.95 kg (8.70 lb)
Operating Temperature	23° to 122°F (-5° to 50°C)
Operating Humidity	10% to 90%, relative, noncondensing
Console port	Cisco standard RJ-45 console port and USB Type C port
USB port	USB Type C port on the front panel of the switch for easy file and image management as well as console port
Buttons	Reset button
Cabling type	Unshielded Twisted Pair (UTP) Category 5e or better for 1000BASE-T
LEDs	System, Link/Act, PoE, Speed
Flash	512 MB
CPU	ARM dual-core at 1.4 GHz
DRAM	1 GB DDR4
Certifications	UL (UL 62368), CSA (CSA 22.2), CE mark, FCC Part 15 (CFR 47) Class A

Want to Buy

[Get a Quote](#)

[Learn More](#) about Hi-Network

[Search](#) our Resource Library

[Follow](#) us on LinkedIn

 Contact for [Sales or Support](#)



Contact HI-NETWORK.COM For Global Fast Shipping

HongKong Office Tel: +00852-66181601

HangZhou Office Tel: +0086-571-86729517

Email: info@hi-network.com

Skype: echo.hinetwork

WhatsApp Business: +8618057156223

